

# National Board Certification Cohort

Recognized as the "gold standard" in teacher certification, the National Board believes higher standards for teachers means better learning for students.



## FREE Meeting Wednesday, February 17, 2016 @5pm



Your district may offer a yearly incentive as well!

### What is it?

National Board Certification will distinguish you as an accomplished, effective teacher who has met the highest standards in the profession.

### Where do I start?

Today, there are 25 certificate areas that span 16 content areas and four student developmental levels.

### Do I pay the full price?

Wisconsin offers reimbursement for up to \$2,000 for costs incurred as part of the National Certification process; candidate support through a collaborative partnership with the (WEAC) and the (WNBK); NBCT bonus through the DPI



### How long does it take?

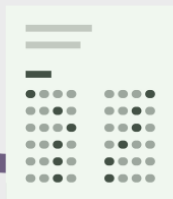
While teachers will be able to complete the entire certification process in one year\*, some may choose to do so over several years if that fits better with other demands on a teacher's time. While maintaining the same level of rigor, the assessment is now grouped into four components.

### Alright, how much?

The total cost of certification is now \$1,900, with each of the four components costing \$475. Candidates now have the option to pay for and submit each component separately.

### How many people do this?

To date, 1,117 Wisconsin teachers have achieved National Board Certification.



### What do I actually do?

You are required to complete four components: three portfolio entries, which you submit online, and a computer-based assessment, which is administered to you at a testing center

### Why would I go through a cohort?

CESA 5 will provide support and resources for you as you embark on this journey. From collaboration to just having a place to ask questions, the cohort model offers comfort and guidance.

### Want more information?

Click here for a guide  
Or go to:  
<http://goo.gl/TgsN4V>



\*Note: not all components are currently available. Please refer to page 6 for the component availability schedule.

Register at: <http://goo.gl/g0awMB>